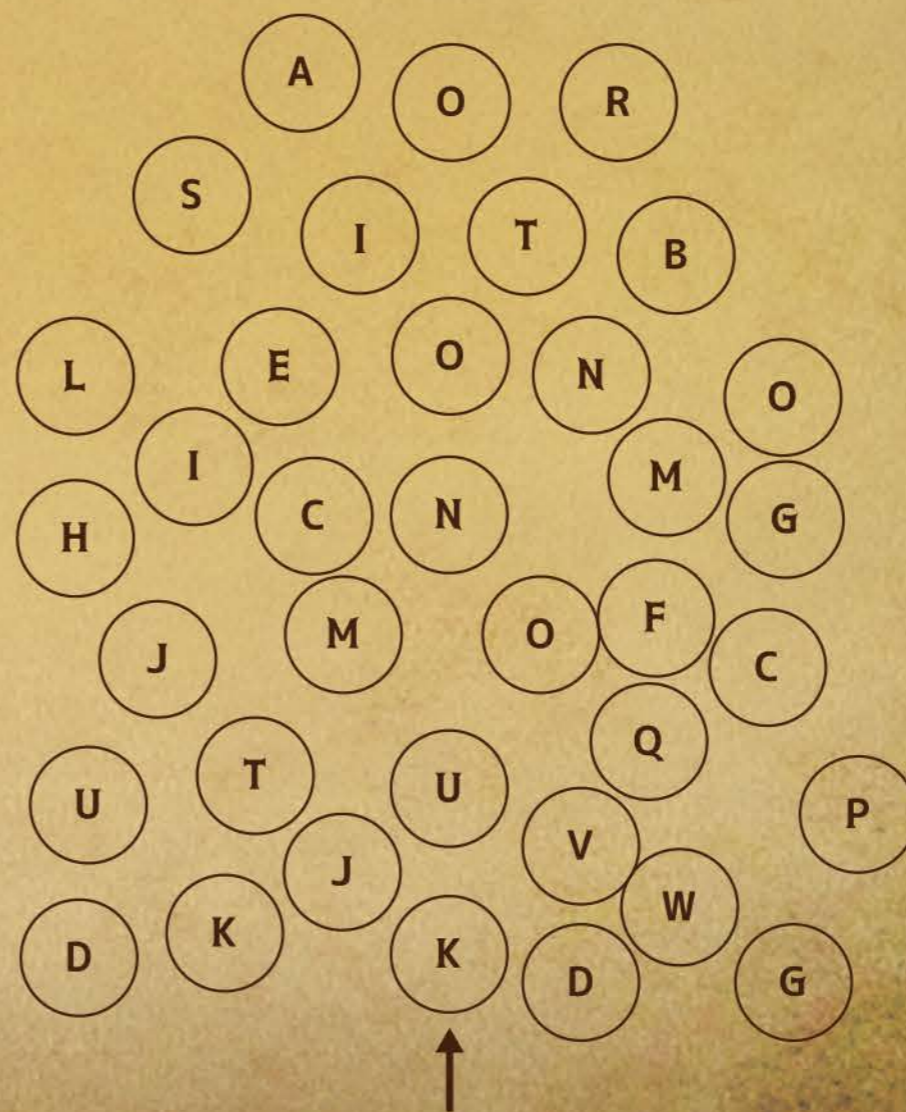


Q1

Izumigatake has "several signs that only those in the know will notice."  
These signs are hidden in nature, or they've been there all along but have been overlooked...  
This spring, as an "Izumigatake Mystery Solving Investigator,"  
you will unravel the mysteries left in the mountain and its surroundings!



泉ヶ岳で春に現れる野鳥「メジロ」は  
巣作りの際に、材料同士をくっつけるために  
何を利用するのでしょうか？



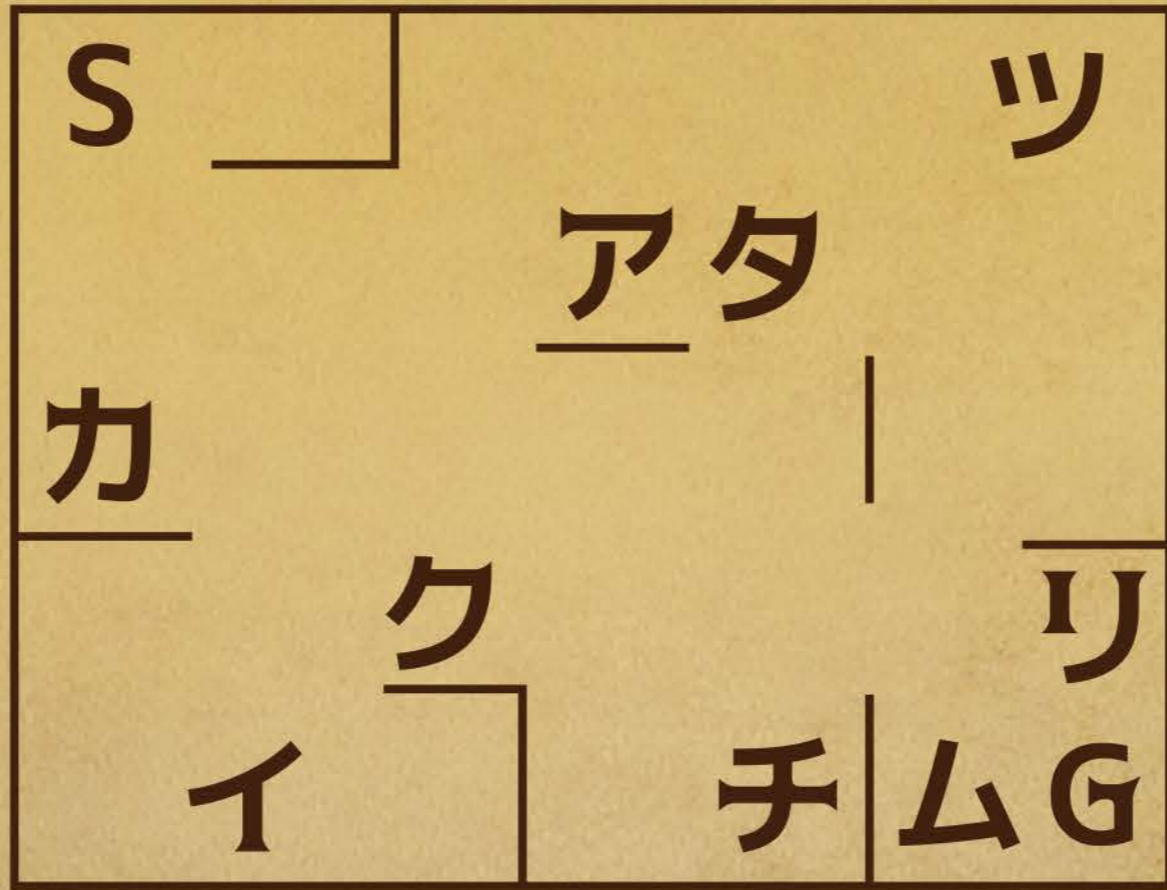
ヒント けんけんぱけんけんぱけん。

Q2

Izumigatake has "several signs that only those in the know will notice."  
 These signs are hidden in nature, or they've been there all along but have been overlooked...  
 This spring, as an "Izumigatake Mystery Solving Investigator,"  
 you will unravel the mysteries left in the mountain and its surroundings!



春、登山道の脇で見かける、  
 「春の妖精」と呼ばれる花は？



壁に当たるまで曲がれないよ。スタートからゴールまで6回曲がって進もう。

Q3

Izumigatake has "several signs that only those in the know will notice."  
These signs are hidden in nature, or they've been there all along but have been overlooked...  
This spring, as an "Izumigatake Mystery Solving Investigator,"  
you will unravel the mysteries left in the mountain and its surroundings!



この建物(旧熊谷家住宅)の熊谷家が  
幕末頃に担っていた役割は?



→



ヒント 左から読もう。

Q4

Izumigatake has "several signs that only those in the know will notice."  
These signs are hidden in nature, or they've been there all along but have been overlooked...  
This spring, as an "Izumigatake Mystery Solving Investigator,"  
you will unravel the mysteries left in the mountain and its surroundings!



仙台市民に愛されている泉ヶ岳。  
標高を語呂合わせで言うと？

← ①		
← ②		
↑ ④	③	



ヒント

スマホ画面に当てはめてみると？

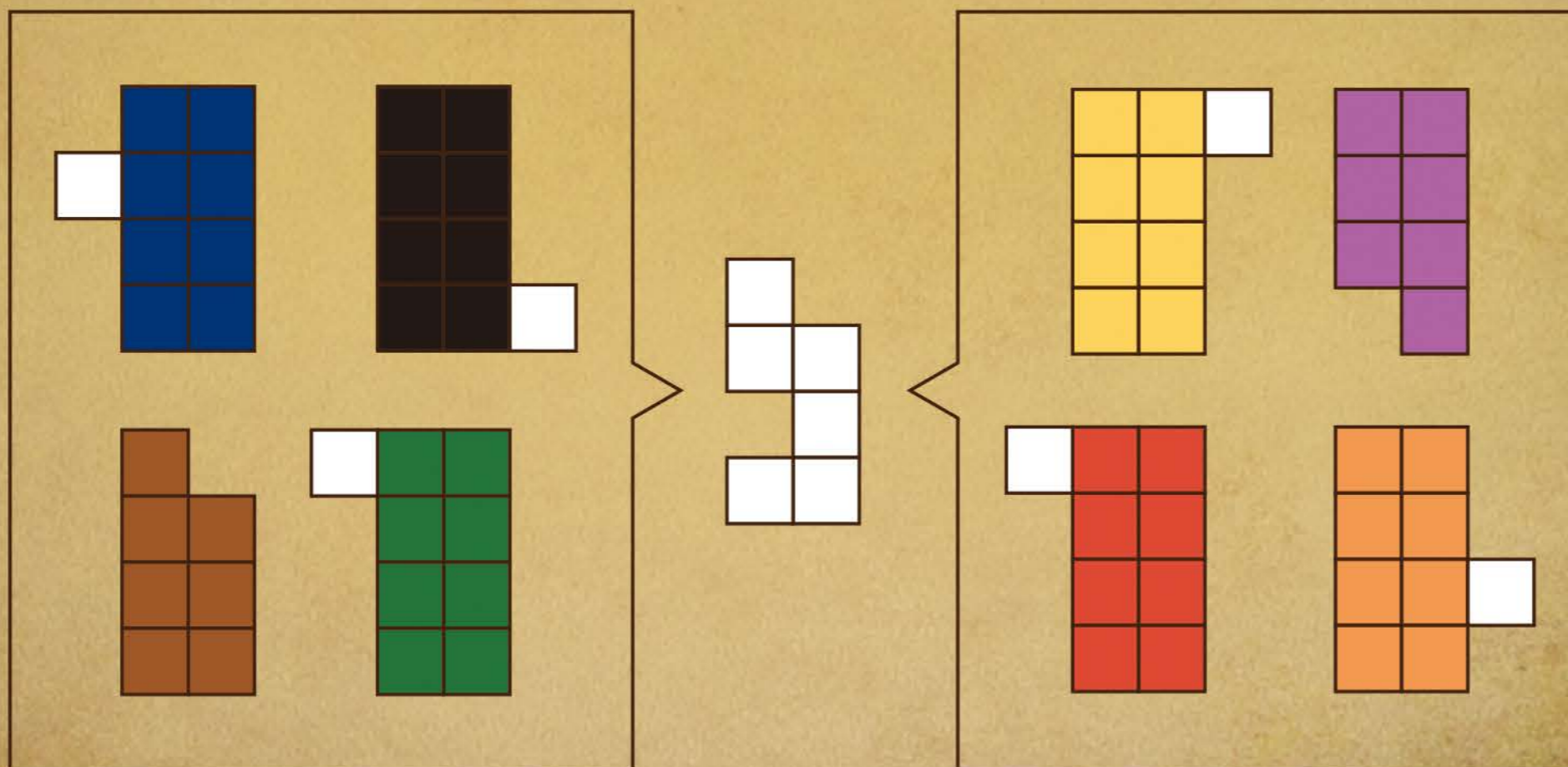
Q5

Izumigatake has "several signs that only those in the know will notice."  
These signs are hidden in nature, or they've been there all along but have been overlooked...  
This spring, as an "Izumigatake Mystery Solving Investigator,"  
you will unravel the mysteries left in the mountain and its surroundings!



仙台市内で一番空に近いレストラン、ル・シエル。

ここでは東北の食材を使った、主にどんな料理が楽しめる？



ヒント

とある国旗が浮かび上がります。この国の料理をなんという？ (回転OK、裏返しはダメ)

Q6

Izumigatake has "several signs that only those in the know will notice."  
 These signs are hidden in nature, or they've been there all along but have been overlooked...  
 This spring, as an "Izumigatake Mystery Solving Investigator,"  
 you will unravel the mysteries left in the mountain and its surroundings!



かつて泉ヶ岳の山頂で  
 雨乞いが行われていましたが、登頂が大変だったため、  
 人々は代わりに何を設置したのでしょうか。

か	た	い	ち	た	と	う
た	は	ち	た	す	た	り
い	ち	じ	り	ん	ひ	た



ヒント



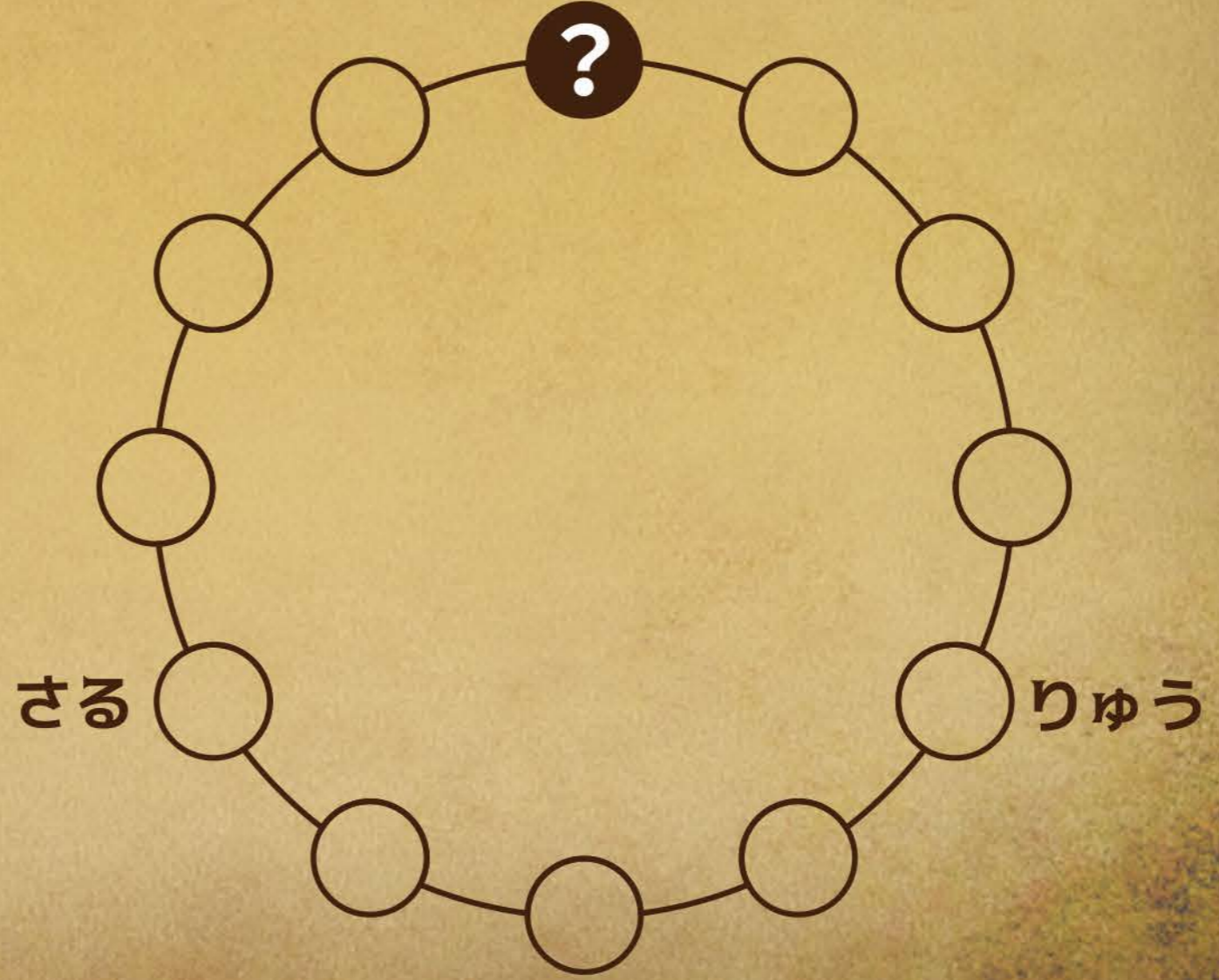
で読もう。

Q7

Izumigatake has "several signs that only those in the know will notice."  
These signs are hidden in nature, or they've been there all along but have been overlooked...  
This spring, as an "Izumigatake Mystery Solving Investigator,"  
you will unravel the mysteries left in the mountain and its surroundings!



昔の人は、泉ヶ岳の残った雪の形で  
その年が豊作かどうかを占いました。  
どんな形になったら  
豊作とされていた？



Q8

Izumigatake has "several signs that only those in the know will notice."  
These signs are hidden in nature, or they've been there all along but have been overlooked...  
This spring, as an "Izumigatake Mystery Solving Investigator,"  
you will unravel the mysteries left in the mountain and its surroundings!



昔、とある神様が現七兆田川に  
大切なものを落としてしまった。  
その落とし物の名前から、  
根白石はじめ泉区西部は  
なんと呼ばれている？

ま し か  
む か り  
く の り  
の の さ よ  
と め さ め よ



ヒント 三角を上から読もう。

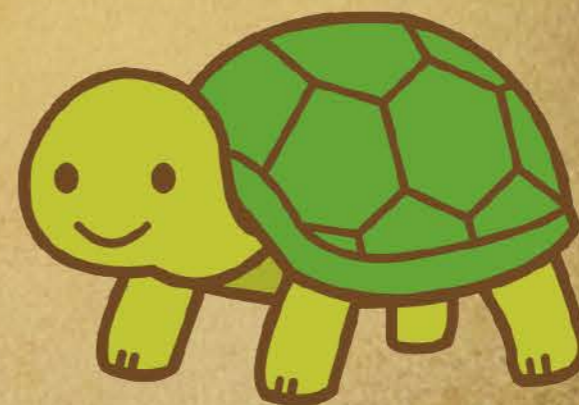


Izumigatake has "several signs that only those in the know will notice."  
These signs are hidden in nature, or they've been there all along but have been overlooked...  
This spring, as an "Izumigatake Mystery Solving Investigator,"  
you will unravel the mysteries left in the mountain and its surroundings!



「根白石」の由来。大昔の人が、  
森の中である動物に向かって矢を放った。  
しかし、それは動物ではなく  
大きな「根の白い大石」であったため、  
根白石と名付けた。その動物はなに？

もしもしかめよ



ヒント 隠れているのは「かめ」と…？